

**GPIB**

# Getting Started with Your Plug and Play GPIB Hardware and Software for Windows 95

June 1996 Edition  
Part Number 321035B-01

© Copyright 1995, 1996 National Instruments Corporation.  
All Rights Reserved.



### Internet Support

GPIB: [gpiib.support@natinst.com](mailto:gpiib.support@natinst.com)  
DAQ: [daq.support@natinst.com](mailto:daq.support@natinst.com)  
VXI: [vxi.support@natinst.com](mailto:vxi.support@natinst.com)  
LabVIEW: [lv.support@natinst.com](mailto:lv.support@natinst.com)  
LabWindows: [lw.support@natinst.com](mailto:lw.support@natinst.com)  
HiQ: [hiq.support@natinst.com](mailto:hiq.support@natinst.com)  
VISA: [visa.support@natinst.com](mailto:visa.support@natinst.com)  
Lookout: [lookout.support@natinst.com](mailto:lookout.support@natinst.com)

E-mail: [info@natinst.com](mailto:info@natinst.com)  
FTP Site: [ftp.natinst.com](ftp://www.natinst.com)  
Web Address: <http://www.natinst.com>



### Bulletin Board Support

BBS United States: (512) 794-5422 or (800) 327-3077  
BBS United Kingdom: 01635 551422  
BBS France: 1 48 65 15 59



### FaxBack Support

(512) 418-1111



### Telephone Support (U.S.)

Tel: (512) 795-8248  
Fax: (512) 794-5678



### International Offices

Australia 03 9 879 9422, Austria 0662 45 79 90 0, Belgium 02 757 00 20,  
Canada (Ontario) 519 622 9310, Canada (Québec) 514 694 8521, Denmark 45 76 26 00,  
Finland 90 527 2321, France 1 48 14 24 24, Germany 089 741 31 30, Hong Kong 2645 3186,  
Italy 02 413091, Japan 03 5472 2970, Korea 02 596 7456, Mexico 95 800 010 0793,  
Netherlands 0348 433466, Norway 32 84 84 00, Singapore 2265886, Spain 91 640 0085,  
Sweden 08 730 49 70, Switzerland 056 200 51 51, Taiwan 02 377 1200, U.K. 01635 523545

### National Instruments Corporate Headquarters

6504 Bridge Point Parkway Austin, TX 78730-5039 Tel: (512) 794-0100



# Important Information

---

## Warranty

The AT-GPIB/TNT (PnP), AT-GPIB/TNT+, NEC-GPIB/TNT (PnP), PCI-GPIB, PCMCIA-GPIB+, and PCMCIA-GPIB hardware is warranted against defects in materials and workmanship for a period of two years from the date of shipment, as evidenced by receipts or other documentation. National Instruments will, at its option, repair or replace equipment that proves to be defective during the warranty period. This warranty includes parts and labor.

The media on which you receive National Instruments software are warranted not to fail to execute programming instructions, due to defects in materials and workmanship, for a period of 90 days from date of shipment, as evidenced by receipts or other documentation. National Instruments will, at its option, repair or replace software media that do not execute programming instructions if National Instruments receives notice of such defects during the warranty period. National Instruments does not warrant that the operation of the software shall be uninterrupted or error free.

A Return Material Authorization (RMA) number must be obtained from the factory and clearly marked on the outside of the package before any equipment will be accepted for warranty work. National Instruments will pay the shipping costs of returning to the owner parts which are covered by warranty.

National Instruments believes that the information in this manual is accurate. The document has been carefully reviewed for technical accuracy. In the event that technical or typographical errors exist, National Instruments reserves the right to make changes to subsequent editions of this document without prior notice to holders of this edition. The reader should consult National Instruments if errors are suspected. In no event shall National Instruments be liable for any damages arising out of or related to this document or the information contained in it.

EXCEPT AS SPECIFIED HEREIN, NATIONAL INSTRUMENTS MAKES NO WARRANTIES, EXPRESS OR IMPLIED, AND SPECIFICALLY DISCLAIMS ANY WARRANTY OF MERCHANTABILITY OR FITNESS FOR A PARTICULAR PURPOSE. CUSTOMER'S RIGHT TO RECOVER DAMAGES CAUSED BY FAULT OR NEGLIGENCE ON THE PART OF NATIONAL INSTRUMENTS SHALL BE LIMITED TO THE AMOUNT THERETOFORE PAID BY THE CUSTOMER. NATIONAL INSTRUMENTS WILL NOT BE LIABLE FOR DAMAGES RESULTING FROM LOSS OF DATA, PROFITS, USE OF PRODUCTS, OR INCIDENTAL OR CONSEQUENTIAL DAMAGES, EVEN IF ADVISED OF THE POSSIBILITY THEREOF. This limitation of the liability of National Instruments will apply regardless of the form of action, whether in contract or tort, including negligence. Any action against National Instruments must be brought within one year after the cause of action accrues. National Instruments shall not be liable for any delay in performance due to causes beyond its reasonable control. The warranty provided herein does not cover damages, defects, malfunctions, or service failures caused by owner's failure to follow the National Instruments installation, operation, or maintenance instructions; owner's modification of the product; owner's abuse, misuse, or negligent acts; and power failure or surges, fire, flood, accident, actions of third parties, or other events outside reasonable control.

## Copyright

Under the copyright laws, this publication may not be reproduced or transmitted in any form, electronic or mechanical, including photocopying, recording, storing in an information retrieval system, or translating, in whole or in part, without the prior written consent of National Instruments Corporation.

## Trademarks

LabVIEW<sup>®</sup>, NAT4882<sup>®</sup>, NI-488<sup>®</sup>, Turbo488<sup>®</sup>, NI-488.2<sup>™</sup>, NI-488.2M<sup>™</sup>, and TNT4882C<sup>™</sup> are trademarks of National Instruments Corporation.

Product and company names listed are trademarks or trade names of their respective companies.

## WARNING REGARDING MEDICAL AND CLINICAL USE OF NATIONAL INSTRUMENTS PRODUCTS

National Instruments products are not designed with components and testing intended to ensure a level of reliability suitable for use in treatment and diagnosis of humans. Applications of National Instruments products involving medical or clinical treatment can create a potential for accidental injury caused by product failure, or by errors on the part of the user or application designer. Any use or application of National Instruments products for or involving medical or clinical treatment must be performed by properly trained and qualified medical personnel, and all traditional medical safeguards, equipment, and procedures that are appropriate in the particular situation to prevent serious injury or death should always continue to be used when National Instruments products are being used. National Instruments products are NOT intended to be a substitute for any form of established process, procedure, or equipment used to monitor or safeguard human health and safety in medical or clinical treatment.

# FCC/DOC Radio Frequency Interference Compliance

---

This equipment generates and uses radio frequency energy and, if not installed and used in strict accordance with the instructions in this manual, may cause interference to radio and television reception. Classification requirements are the same for the Federal Communications Commission (FCC) and the Canadian Department of Communications (DOC). The FCC/DOC classification is indicated on a label on the devices. Look at the product to determine if your equipment has been tested and found to comply with Class A or Class B, then read the appropriate information below regarding the compliance of your product:

## Class A

### Federal Communications Commission

This equipment has been tested and found to comply with the limits for a Class A digital device, pursuant to part 15 of the FCC Rules. These limits are designed to provide reasonable protection against harmful interference when the equipment is operated in a commercial environment. This equipment generates, uses, and can radiate radio frequency energy and, if not installed and used in accordance with the instruction manual, may cause harmful interference to radio communications. Operation of this equipment in a residential area is likely to cause harmful interference in which case the user will be required to correct the interference at his own expense.

### Canadian Department of Communications

This Class A digital apparatus meets all requirements of the Canadian Interference-Causing Equipment Regulations.

Cet appareil numérique de la classe A respecte toutes les exigences du Règlement sur le matériel brouilleur du Canada.

## Class B

### Federal Communications Commission

This equipment has been tested and found to comply with the limits for a Class B digital device, pursuant to part 15 of the FCC Rules. These limits are designed to provide reasonable protection against harmful interference in a residential installation. This equipment generates, uses and can radiate radio frequency energy and, if not installed and used in accordance with the instructions, may cause harmful interference to radio communications. However, there is no guarantee that interference will not occur in a particular installation. If this equipment does cause harmful interference to radio or television reception, which can be determined by turning the equipment off and on, the user is encouraged to try to correct the interference by one or more of the following measures:

- Reorient or relocate the receiving antenna.
- Increase the separation between the equipment and receiver.
- Connect the equipment into an outlet on a circuit different from that to which the receiver is connected.
- Consult the dealer or an experienced radio/TV technician for help.

### Canadian Department of Communications

This Class B digital apparatus meets all requirements of the Canadian Interference-Causing Equipment Regulations.

Cet appareil numérique de la classe B respecte toutes les exigences du Règlement sur le matériel brouilleur du Canada.

## FCC Notices to User

*Changes or modifications not expressly approved by National Instruments could void the user's authority to operate the equipment under the FCC Rules.*

*This device complies with the FCC rules only if used with shielded interface cables of suitable quality and construction. National Instruments used such cables to test this device and provides them for sale to the user. The use of inferior or nonshielded interface cables could void the user's authority to operate the equipment under the FCC rules.*

If necessary, consult National Instruments or an experienced radio/television technician for additional suggestions. The following booklet prepared by the FCC may also be helpful: *Interference to Home Electronic Entertainment Equipment Handbook*. This booklet is available from the U.S. Government Printing Office, Washington, DC 20402.

***Table  
of  
Contents***

---

## **About This Manual**

How to Use the Manual Set .....	xi
Organization of This Manual .....	xii
Conventions Used in This Manual .....	xiii
Related Documentation .....	xiv
Customer Communication .....	xiv

## **Chapter 1**

### **Introduction**

How to Use This Manual .....	1-1
What You Need to Get Started .....	1-2
Optional Equipment .....	1-3
Plug and Play GPIB Hardware Overview .....	1-3
NI-488.2M Software Overview .....	1-4
GPIB Analyzer Software Overview .....	1-5
Optional Programming Tools .....	1-5

## **Chapter 2**

### **Installation and Configuration**

Install the Plug and Play GPIB Software .....	2-1
Install the Plug and Play GPIB Hardware .....	2-3
Install the AT-GPIB/TNT (PnP), AT-GPIB/TNT+, or PCI-GPIB .....	2-3
Install the PCMCIA-GPIB+ or PCMCIA-GPIB .....	2-5
Install the NEC-GPIB/TNT (PnP) .....	2-6
Configure the NI-488.2M Software .....	2-6

## **Chapter 3**

### **Verify the Installation**

## Chapter 4

### Begin to Use the GPIB Software

Using the NI-488.2M Software .....	4-1
Introduction to the Win32 Interactive Control Utility .....	4-1
Introduction to the GPIB Spy Utility .....	4-1
Running Existing DOS GPIB Applications .....	4-2
General Programming Considerations .....	4-3
Using the GPIB Analyzer Software .....	4-3

## Appendix A

### Uninstall the Hardware and Software

Uninstalling the Plug and Play GPIB Hardware.....	A-1
Uninstalling the Plug and Play GPIB Software.....	A-2

## Appendix B

### Forcing Windows 95 to Detect the GPIB Hardware

## Appendix C

### Troubleshooting and Common Questions

Troubleshooting EDVR Error Conditions .....	C-1
EDVR Error Condition with ibcntl Set to 0xE028002C .....	C-1
EDVR Error Condition with ibcntl Set to 0xE0140025.....	C-1
EDVR Error Condition with ibcntl Set to 0xE0140035.....	C-1
EDVR Error Condition with ibcntl Set to 0xE0320029.....	C-2
EDVR Error Condition with ibcntl Set to 0xE0140004.....	C-2
EDVR Error Condition with ibcntl Set to 0xE1030043.....	C-2
Troubleshooting Device Manager Problems .....	C-2
No National Instruments GPIB Interfaces Item .....	C-3
Missing GPIB Interface .....	C-3
GPIB Interface Not Working Properly.....	C-3
Troubleshooting Diagnostic Utility Failures .....	C-5
Missing Software Components .....	C-5
No GPIB Interfaces Present .....	C-5
GPIB Cables Need to Be Disconnected .....	C-5
Address Resource Conflict.....	C-6
Interrupt Resource Conflict.....	C-6
DMA Resource Conflict.....	C-6
Single-Cycle DMA Required.....	C-6
GPIB Software Problem Encountered .....	C-7
Unknown Problem Encountered .....	C-7



Common Questions .....	C-7
GPIB Hardware and NI-488.2M Software Questions.....	C-7
GPIB Analyzer Questions .....	C-11

## Appendix D Specifications

Hardware Characteristics.....	D-1
Software Transfer Rates .....	D-4

## Appendix E Customer Communication.....

E-1

## Glossary.....

G-1

## Figures

Figure 2-1. Add/Remove Programs Properties Dialog Box.....	2-1
Figure 2-2. GPIB Software Setup Screen.....	2-2
Figure 2-3. Installing the AT-GPIB/TNT (PnP) .....	2-4
Figure 2-4. Inserting the PCMCIA-GPIB+ or PCMCIA-GPIB .....	2-5
Figure 2-5. GPIB Interface That Is Working Properly.....	2-7
Figure 2-6. GPIB Interface That Is Not Working Properly .....	2-7
Figure 2-7. NI-488.2M Settings Tab for the AT-GPIB/TNT (PnP).....	2-8
Figure 2-8. Device Templates Tab for the Logical Device Templates .....	2-9
Figure 3-1. Diagnostic Utility after Testing.....	3-1
Figure A-1. Selecting an Interface to Remove.....	A-2
Figure A-2. Add/Remove Programs Properties Dialog Box.....	A-3
Figure A-3. Uninstallation Results .....	A-4
Figure C-1. GPIB Interface That Is Not Working Properly .....	C-3

## Tables

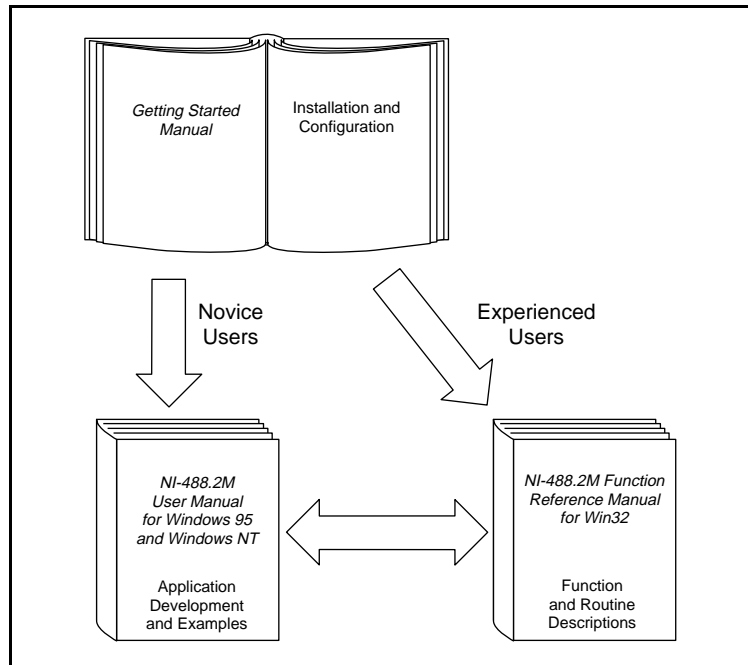
Table D-1. AT-GPIB/TNT (PnP) Hardware Characteristics.....	D-1
Table D-2. AT-GPIB/TNT+ Hardware Characteristics.....	D-2
Table D-3. NEC-GPIB/TNT (PnP) Hardware Characteristics .....	D-2
Table D-4. PCI-GPIB Hardware Characteristics.....	D-3
Table D-5. PCMCIA-GPIB+ Hardware Characteristics .....	D-3
Table D-6. PCMCIA-GPIB Hardware Characteristics.....	D-4
Table D-7. NI-488.2M Software Transfer Rates for the Plug and Play GPIB Hardware .....	D-4

## *About This Manual*

This manual contains instructions to help you install and configure the National Instruments Plug and Play GPIB hardware and software for Windows 95. The Plug and Play GPIB hardware includes the AT-GPIB/TNT (PnP), AT-GPIB/TNT+, PCI-GPIB, PCMCIA-GPIB+, PCMCIA-GPIB, and NEC-GPIB/TNT (PnP).

This manual assumes that you are already familiar with Windows 95.

## How to Use the Manual Set



Use this getting started manual to install and configure your Plug and Play GPIB hardware and software for Windows 95.

Use the *NI-488.2M User Manual for Windows 95 and Windows NT* to learn the basics of GPIB and how to develop an application program. The user manual also contains debugging information and detailed examples.

Use the *NI-488.2M Function Reference Manual for Win32* for specific NI-488 function and NI-488.2 routine information, such as format, parameters, and possible errors.

## Organization of This Manual

---

This manual is organized as follows:

- Chapter 1, *Introduction*, explains how to use this manual, lists what you need to get started and optional equipment you can order, and briefly describes the Plug and Play GPIB hardware and software for Windows 95.
- Chapter 2, *Installation and Configuration*, describes how to install and configure the Plug and Play GPIB hardware and software for Windows 95.
- Chapter 3, *Verify the Installation*, describes how to verify the hardware and software installation.
- Chapter 4, *Begin to Use the GPIB Software*, helps you get started with the NI-488.2M software and the GPIB Analyzer software for Windows 95.
- Appendix A, *Uninstall the Hardware and Software*, describes how to uninstall the Plug and Play GPIB hardware and software from Windows 95.
- Appendix B, *Forcing Windows 95 to Detect the GPIB Hardware*, contains instructions to help you install your GPIB interface if Windows 95 has not detected it properly.
- Appendix C, *Troubleshooting and Common Questions*, describes how to troubleshoot problems and answers some common questions.
- Appendix D, *Specifications*, describes the physical characteristics of the GPIB hardware and the transfer rates of the NI-488.2M software, along with the recommended operating conditions.
- Appendix E, *Customer Communication*, contains forms you can use to request help from National Instruments or to comment on our products and manuals.

- The *Glossary* contains an alphabetical list and a description of terms used in this manual, including abbreviations, acronyms, metric prefixes, mnemonics, and symbols.

## Conventions Used in This Manual

---

	The following conventions are used in this manual.
»	The » symbol leads you through nested menu items and dialog box options to a final action. The sequence <b>File»Page Setup»Options»Substitute Fonts</b> directs you to pull down the <b>File</b> menu, select the <b>Page Setup</b> item, select <b>Options</b> , and finally select the <b>Substitute Fonts</b> option from the last dialog box.
AT-GPIB/TNT (PnP)	<i>AT-GPIB/TNT (PnP)</i> refers to the AT-GPIB/TNT (Plug and Play) interface board.
<b>bold</b>	Bold text denotes menus, menu items, dialog buttons, or options.
<b><i>bold italic</i></b>	Bold italic text denotes a note, caution, or warning.
<b>bold monospace</b>	Bold text in this font denotes the messages and responses that the computer automatically prints to the screen.
IEEE 488 and IEEE 488.2	<i>IEEE 488</i> and <i>IEEE 488.2</i> refer to the ANSI/IEEE Standard 488.1-1987 and the ANSI/IEEE Standard 488.2-1992, respectively, which define the GPIB.
<i>italic</i>	Italic text denotes emphasis, a cross reference, or an introduction to a key concept.
monospace	Text in this font denotes text or characters that are to be literally input from the keyboard, sections of code, programming examples, and syntax examples. This font is also used for the proper names of disk drives, directories, programs, subprograms, subroutines, device names, functions, variables, field names and filenames.
NEC-GPIB/TNT (PnP)	<i>NEC-GPIB/TNT (PnP)</i> refers to the NEC-GPIB/TNT (Plug and Play) interface board.
Plug and Play GPIB Hardware	<i>Plug and Play GPIB Hardware</i> refers to the AT-GPIB/TNT (PnP), AT-GPIB/TNT+, PCI-GPIB, PCMCIA-GPIB+, PCMCIA-GPIB, and NEC-GPIB/TNT (PnP), in cases where the material applies to all the interfaces.  Abbreviations, acronyms, metric prefixes, mnemonics, symbols, and terms are listed in the <i>Glossary</i> .

## Related Documentation

---

The following documents contain information that you may find helpful as you read this manual.

- ANSI/IEEE Standard 488.1-1987, *IEEE Standard Digital Interface for Programmable Instrumentation*
- ANSI/IEEE Standard 488.2-1992, *IEEE Standard Codes, Formats, Protocols, and Common Commands*
- *Microsoft Windows 95 User's Guide*, Microsoft Corporation

## Customer Communication

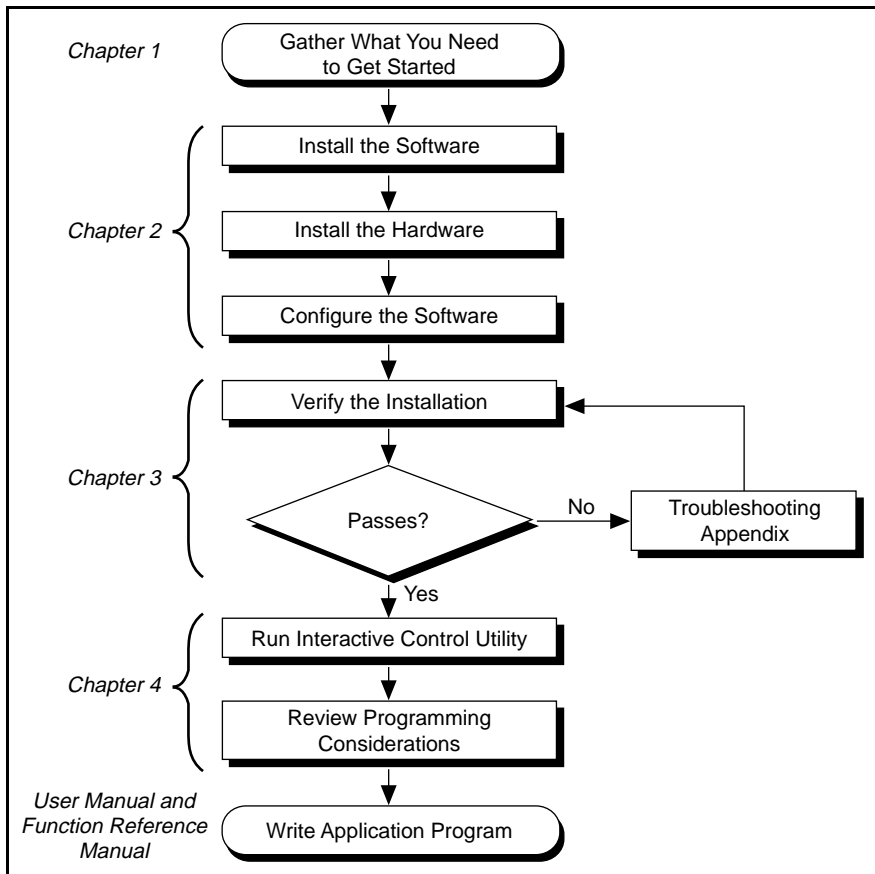
---

National Instruments wants to receive your comments on our products and manuals. We are interested in the applications you develop with our products, and we want to help if you have problems with them. To make it easy for you to contact us, this manual contains comment and configuration forms for you to complete. These forms are in Appendix E, *Customer Communication*, at the end of this manual.

# Introduction

This chapter explains how to use this manual, lists what you need to get started and optional equipment you can order, and briefly describes the Plug and Play GPIB hardware and software for Windows 95.

## How to Use This Manual



## What You Need to Get Started

---

Make sure you have all of the items listed before you attempt to install the hardware and software.

- ☐ Windows 95 installed on your computer
- ☐ One of the following Plug and Play GPIB interfaces:
  - AT-GPIB/TNT (PnP)
  - AT-GPIB/TNT+
  - PCI-GPIB
  - PCMCIA-GPIB
  - PCMCIA-GPIB+
  - NEC-GPIB/TNT (PnP)
- ☐ The following 3.5 in., high density (1.44 MB) disks, which come in your kit:
  - GPIB Software for Windows 95 (Setup Disk)*
  - GPIB Software for Windows 95 (NI-488.2M Software)*
- ☐ If you have the AT-GPIB/TNT+ or PCMCIA-GPIB+, you also need the following 3.5 in., high density (1.44 MB) disk, which comes in your kit:
  - GPIB Software for Windows 95 (GPIB Analyzer Software)*
- ☐ If you have the AT-GPIB/TNT+ or PCMCIA-GPIB+, and you plan to use the GPIB Analyzer software, you must have the following:
  - Personal computer using a 25 MHz 80386 or higher microprocessor. National Instruments recommends a 33 MHz 80486 or higher microprocessor.
  - Math coprocessor (80386 with an 80387, 80486SX with an 80487, 80486DX, or higher microprocessor)
- ☐ GPIB cables—single-shielded or double-shielded, Type X1, X2, X4, X5, or X11, which you can order from National Instruments

## Optional Equipment

---

Call National Instruments for more information about the following optional equipment.

- Serial or parallel bus extender and cables
- Bus expander/isolator
- GPIB mechanical switch

## Plug and Play GPIB Hardware Overview

---

National Instruments Plug and Play GPIB hardware includes the following interfaces:

AT-GPIB/TNT (PnP)  
 AT-GPIB/TNT+  
 PCI-GPIB  
 PCMCIA-GPIB  
 PCMCIA-GPIB+  
 NEC-GPIB/TNT (PnP)

The Plug and Play GPIB hardware is completely software-configurable. The AT-GPIB/TNT (PnP) and AT-GPIB/TNT+ comply with the Plug and Play ISA standard, the NEC-GPIB/TNT (PnP) complies with the Plug and Play for PC-98 Bus standard, the PCI-GPIB complies with the PCI Local Bus Specification, and the PCMCIA-GPIB and PCMCIA-GPIB+ comply with the PC Card standard.

The Plug and Play GPIB hardware transforms your computer into a full-functioning GPIB Talker/Listener/Controller. The TNT4882C chip on each Plug and Play GPIB board combines the circuitry of the NAT4882 ASIC, the Turbo488 ASIC, and GPIB transceivers to create a single-chip IEEE 488.2 interface. The TNT4882C also implements the HS488 high-speed protocol, which increases the maximum data transfer rate to up to 7.8 Mbytes/s, depending on the computer and the system configuration. For more information about transfer rates, refer to Appendix D, *Specifications*, in this manual. For more information about HS488, refer to Chapter 7, *GPIB Programming Techniques*, in the *NI-488.2M User Manual for Windows 95 and Windows NT*.

The AT-GPIB/TNT+ and PCMCIA-GPIB+ combine the abilities of the GPIB controller and a complete GPIB analyzer into a single interface.



These interfaces offer a low-cost, high-speed alternative to GPIB controllers and analyzers packaged separately. Because these two interfaces support both the NI-488.2M software and the GPIB Analyzer, you can develop your application and perform low-level GPIB system analysis using the same computer.

The AT-GPIB/TNT (PnP), NEC-GPIB/TNT (PnP), PCI-GPIB, and PCMCIA-GPIB each contain one GPIB load; you can connect up to 14 instruments to one of these interfaces. The AT-GPIB/TNT+ and the PCMCIA-GPIB+ each contain two GPIB loads; you can connect up to 13 instruments to one of these interfaces. If you want to use more instruments, you can order a bus extender or expander from National Instruments. Refer to Appendix D, *Specifications*, for more information about the hardware specifications and recommended operating conditions.

## NI-488.2M Software Overview

---

The NI-488.2M software includes a native, 32-bit multitasking Windows 95 driver that is fully Plug and Play aware. The driver components are dynamically loaded when Windows 95 detects new Plug and Play GPIB hardware. The driver components are dynamically unloaded when Windows 95 detects the removal of Plug and Play GPIB hardware.

The NI-488.2M software for Windows 95 supports the concurrent use of multiple types of GPIB hardware. For example, you can communicate with GPIB devices through both a PCI-GPIB and PCMCIA-GPIB in the same system at the same time. The NI-488.2M software is fully integrated into the Windows 95 operating system. It is configurable through the System applet and uninstallable through the Add/Remove Programs applet of the Control Panel.

The NI-488.2M software, along with the Plug and Play GPIB hardware, transforms your computer into a GPIB Talker/Listener/Controller with complete communications and bus management capability. The NI-488.2M software includes the following components:

- Device driver
- Diagnostic test utility
- Configuration utility
- Interactive control program

- Utilities for software development
- Language interface libraries for Microsoft Visual C/C++ 2.0 or higher, Borland C/C++ 4.0 or higher, and Microsoft Visual Basic 4.0 or higher
- Example programs that use NI-488 functions and NI-488.2 routines

Refer to Appendix D, *Specifications*, for information about the NI-488.2M software transfer rates.

## GPIB Analyzer Software Overview

---

The GPIB Analyzer software, available only with the AT-GPIB/TNT+ or PCMCIA-GPIB+ hardware, can capture, monitor, and participate in bus activity on the GPIB. You can also use the GPIB+ hardware and GPIB Analyzer software to troubleshoot a variety of IEEE 488 hardware and software problems. The GPIB Analyzer can help you solve GPIB communication problems such as addressing inconsistencies, protocol violations, and simple bus timeout conditions. The built-in timestamping capability can be used to benchmark GPIB applications.

The GPIB Analyzer consists of the following components:

- GPIB Analyzer application
- GPIB Analyzer device drivers
- GPIB Analyzer online help
- LabWindows/CVI Run-Time System (used by the GPIB Analyzer)

For more information on how to use the GPIB Analyzer, refer to the GPIB Analyzer online help or the *GPIB Analyzer User Manual*. For AT-GPIB/TNT+ or PCMCIA-GPIB+ ordering information, contact National Instruments.

## Optional Programming Tools

---

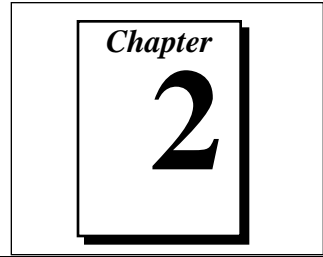
Your kit includes the NI-488.2M software for Windows 95. In addition, you can order the LabWindows<sup>®</sup>/CVI or LabVIEW software from National Instruments. LabWindows/CVI and LabVIEW include instrument driver libraries that make it easier to communicate with your GPIB instruments.

LabWindows/CVI is an interactive ANSI C development environment for building test and measurement and instrument control systems. It includes interactive code-generation tools and a graphical editor for building custom user interfaces. It also includes built-in libraries for IEEE 488.2, VXI, RS-232 control, and plug-in data acquisition. When you order LabWindows/CVI, you also get more than 300 complete instrument drivers, which are modular, source-code programs that handle the communication with your instrument so that you do not have to learn the programming details.

LabVIEW is a complete programming environment that departs from the sequential nature of traditional programming languages and features a graphical programming environment. It includes all the tools needed for instrument control, data acquisition, analysis, and presentation. LabVIEW also includes an extensive instrument driver library.

For more information about LabWindows/CVI and LabVIEW, contact National Instruments.

# Installation and Configuration



This chapter describes how to install and configure the Plug and Play GPIB hardware and software for Windows 95.

## Install the Plug and Play GPIB Software

Before installing the Plug and Play GPIB hardware, complete the following steps to install the GPIB software for Windows 95.

1. Select **Start»Settings»Control Panel**.
2. Double-click on the **Add/Remove Programs** icon in the Control Panel to launch the Add/Remove Programs applet. A dialog box similar to the one in Figure 2-1 appears.

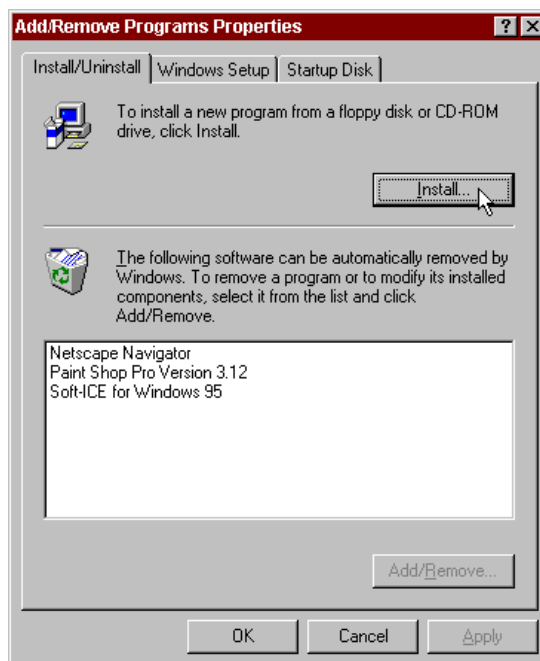


Figure 2-1. Add/Remove Programs Properties Dialog Box

You can use this same applet to uninstall the GPIB software at a later time. Refer to Appendix A, *Uninstall the Hardware and Software*, for more information.

3. Click on the **Install...** button.
4. Insert the *GPIB Software for Windows 95 (Setup Disk)*, and click on the **Next** button to proceed.
5. The software installation wizard begins with the screen shown in Figure 2-2. Choose the appropriate type of installation to begin the setup process.



**Note:** *The second option installs the GPIB Analyzer software, which is supported only by the AT-GPIB/TNT+ and the PCMCIA-GPIB+.*

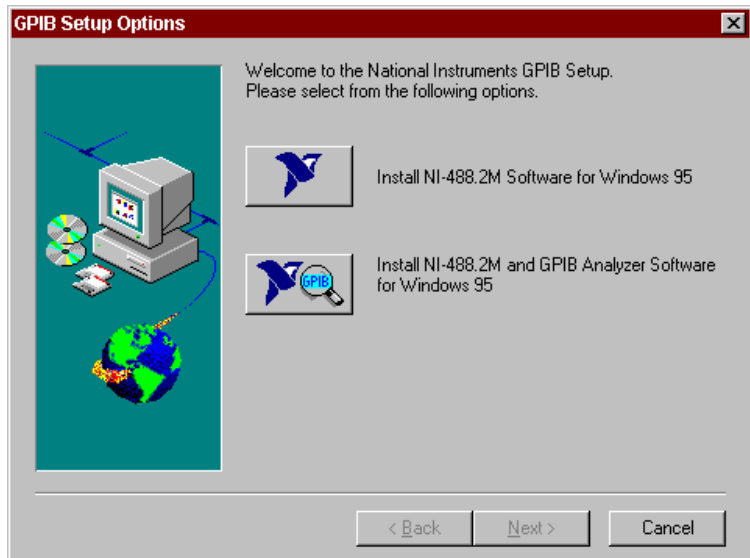


Figure 2-2. GPIB Software Setup Screen

The setup wizard guides you through the necessary steps to install the GPIB software. You may go back and change values where appropriate by choosing **Back**. You can exit the setup where appropriate by choosing **Cancel**.

6. When the setup is complete, shut down your computer. If this is your first time to install the GPIB software for Windows 95, if you need to add new hardware, or if you are installing the software over the Compatibility Release for Windows 95, proceed to the next section, *Install the Plug and Play GPIB Hardware*. If you are installing the software over an existing version of the native

Windows 95 GPIB software, turn your computer back on, and you will be able to start using your GPIB hardware and software.

## Install the Plug and Play GPIB Hardware

---

This section describes how to install your Plug and Play GPIB hardware. Refer to the section that describes the installation for your particular board.

### Install the AT-GPIB/TNT (PnP), AT-GPIB/TNT+, or PCI-GPIB



**Warning:** *Electrostatic discharge can damage several components on these GPIB boards. To avoid such damage in handling your board, touch the antistatic plastic package to a metal part of your computer chassis before removing the board from the package.*

If your GPIB hardware is already installed, skip to step 8. Otherwise, perform the following steps.

1. Make sure that your computer is turned off. Keep the computer plugged in so that it remains grounded while you install the GPIB hardware.
2. Remove the top cover (or other access panels) to give yourself access to the computer expansion slots.
3. Find an unused expansion slot of the appropriate type in your computer.
4. Remove the corresponding slot cover on the back panel of the computer.
5. Insert the GPIB board into the slot with the GPIB connector sticking out of the opening on the back panel. It might be a tight fit, but do not force the board into place. Figure 2-3 shows how to install the AT-GPIB/TNT (PnP) into a 16-bit ISA expansion slot.

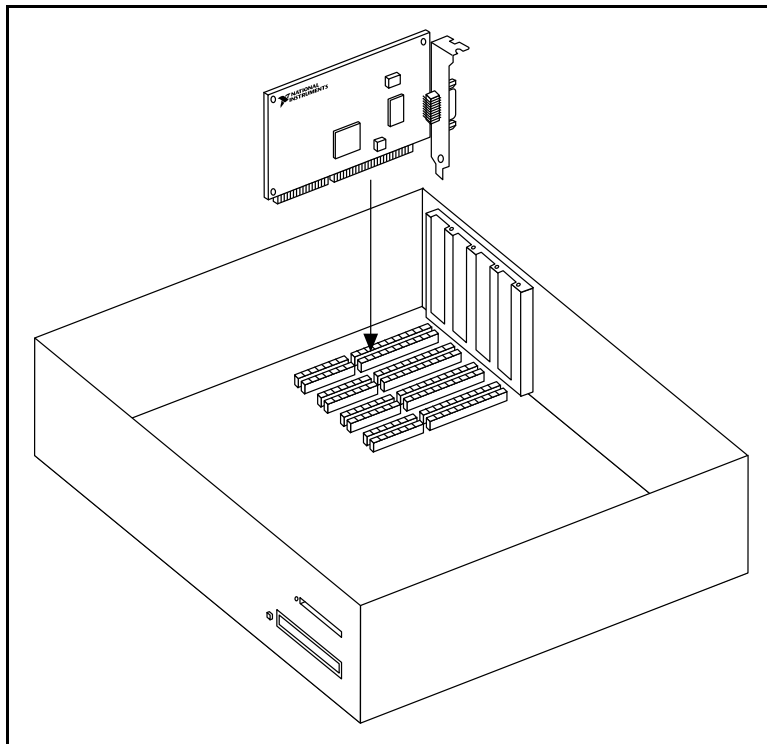


Figure 2-3. Installing the AT-GPIB/TNT (PnP)

6. Screw the mounting bracket of the GPIB board to the back panel rail of the computer.
7. Replace the top cover (or the access panel to the expansion slot).
8. Turn on your computer and start Windows 95. Windows 95 should automatically detect the GPIB hardware.

If your GPIB hardware is a PCI-GPIB, Windows 95 automatically determines which driver is appropriate. A **New Hardware Found** dialog box appears, then goes away on its own.

If your GPIB hardware is an AT-GPIB/TNT (PnP), a **New Hardware Found** dialog box appears. Make sure that **Windows default driver** is selected, and click the **OK** button.

If your GPIB hardware is an AT-GPIB/TNT+, two **New Hardware Found** dialog boxes appear. In each of the dialog boxes, make sure that **Windows default driver** is selected, and click the **OK** button.

If the **New Hardware Found** dialog box does not appear when you restart Windows 95, refer to Appendix B, *Forcing Windows 95 to Detect the GPIB Hardware*.

The GPIB hardware installation is now complete. Proceed to the *Configure the NI-488.2M Software* section, later in this chapter.

## Install the PCMCIA-GPIB+ or PCMCIA-GPIB

To install the PCMCIA-GPIB+ or PCMCIA-GPIB in your computer, first start Windows 95. If the card is not already inserted, insert it into a free PC Card (PCMCIA) socket the same way you insert a disk into a floppy drive. The card has no jumpers or switches to set, and you do not need to power down the system when you insert it. Figure 2-4 shows how to insert the PCMCIA-GPIB+ or PCMCIA-GPIB and how to connect the PCMCIA-GPIB cable.

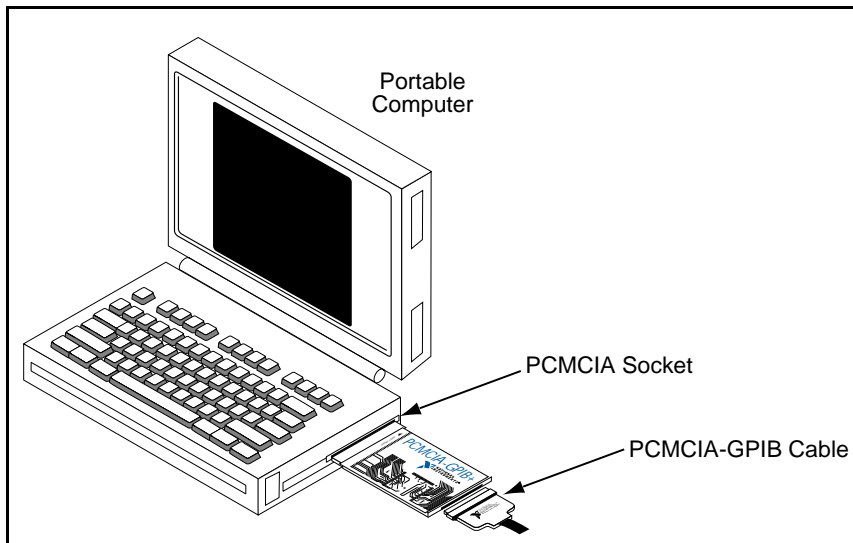


Figure 2-4. Inserting the PCMCIA-GPIB+ or PCMCIA-GPIB

Windows 95 automatically pops up one or more **New Hardware Found** dialog boxes when it detects and configures a PC Card. If you are installing a PCMCIA-GPIB+, several **New Hardware Found** dialog boxes appear when you insert the card. If you are installing a PCMCIA-GPIB, a single **New Hardware Found** dialog box appears when you insert the card.

If no **New Hardware Found** dialog box appears when you insert your PC Card, make sure that 32-bit PCMCIA drivers are enabled. In the **System Properties** dialog box under **Start»Settings»Control Panel»System**, select the **Performance** tab and look at the **PC Cards (PCMCIA):** line. If it reads “32-bit,” the 32-bit PCMCIA drivers are enabled. In this case, follow the instructions in Appendix B, *Forcing*



*Windows 95 to Detect the GPIB Hardware.* Otherwise, enable 32-bit PCMCIA drivers by running the **PC Card (PCMCIA) Wizard**, a control panel applet found under **Start»Settings»Control Panel»PC Card (PCMCIA)**. After enabling 32-bit PCMCIA drivers, you need to shut down your computer and restart it. When your computer restarts, your PCMCIA-GPIB+ or PCMCIA-GPIB is detected, assuming it has been inserted, and the **New Hardware Found** dialog boxes appear. If no **New Hardware Found** dialog box appears, refer to Appendix B, *Forcing Windows 95 to Detect the GPIB Hardware.*

The PCMCIA-GPIB+ or PCMCIA-GPIB hardware installation is now complete. Proceed to the *Configure the NI-488.2M Software* section, later in this chapter.

## Install the NEC-GPIB/TNT (PnP)

Perform the following steps to install the NEC-GPIB/TNT (PnP).

1. Make sure that your computer is turned off. Keep the computer plugged in so that it remains grounded while you install the GPIB hardware.
2. Find an unused expansion slot in your computer.
3. Remove the corresponding slot cover on the back panel of the computer.
4. Insert the NEC-GPIB/TNT (PnP) into the slot. It might be a tight fit, but do not force the board into place.
5. Screw the mounting bracket of the NEC-GPIB/TNT (PnP) to the back panel of the computer.
6. Turn on your computer and start Windows 95. Windows 95 should automatically detect the GPIB hardware.
7. In the **New Hardware Found** dialog box that appears, make sure that **Windows default driver** is selected, and click **OK**.

The NEC-GPIB/TNT hardware installation is now complete. Proceed to the next section, *Configure the NI-488.2M Software*.

## Configure the NI-488.2M Software

---

The NI-488.2M configuration utility is fully integrated with the Windows 95 Device Manager. You can use it to examine or modify the configuration of the NI-488.2M software. The context-sensitive online help, available by right-clicking on any of the controls on the

configuration utility tabs, includes all of the information that you need to configure the NI-488.2M software properly.

To configure the NI-488.2M software, double-click on the **System** icon under **Start»Settings»Control Panel**. In the **System Properties** dialog box that appears, select the **Device Manager** tab, click the **View devices by type** radio button at the top of the tab, and double-click the **National Instruments GPIB Interfaces** icon.

If there is no **National Instruments GPIB Interfaces** item or if a circled X or exclamation point (!) appears through the eagle icon, the GPIB interface is not working properly. Figure 2-5 shows an example of an AT-GPIB/TNT (PnP) that is working properly, and Figure 2-6 shows an example of an AT-GPIB/TNT (PnP) that is not working properly. Refer to the *Troubleshooting Device Manager Problems* section of Appendix C, *Troubleshooting and Common Questions* to resolve the problem.

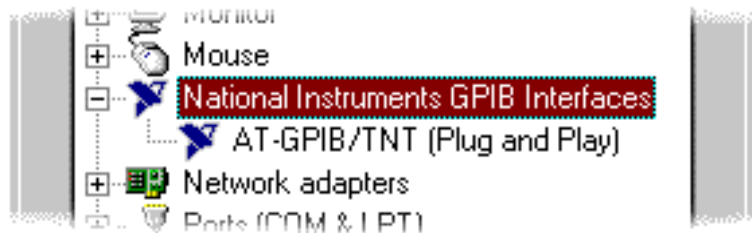


Figure 2-5. GPIB Interface That Is Working Properly



Figure 2-6. GPIB Interface That Is Not Working Properly

To configure a particular interface, double-click on that interface type in the list of installed interfaces immediately below **National Instruments GPIB Interfaces**. If you are using more than one interface, you must configure the NI-488.2M software to associate a logical name (GPIB0, GPIB1, and so on) with each physical GPIB interface.

The **Resources** tab provides information about the hardware resources assigned to the GPIB interface. Use the **Resources** tab to examine the assigned resources to verify that there are no conflicts. The **Conflicting Device List**: lists any conflicts. If conflicts exist, uncheck the **Use automatic settings** checkbox and use the **Change Setting...** button to select conflict-free resources for the Plug and Play GPIB hardware.

The **NI-488.2M Settings** tab provides information about the software configuration for the GPIB interface. Use the **Interface Name** drop-down box to select a logical name (GPIB0, GPIB1, and so on) for the GPIB interface. Repeat this process for each interface you need to configure. Figure 2-7 shows the **NI-488.2M Settings** tab for an AT-GPIB/TNT (PnP).



**Note:** *GPIB Analyzer software settings are available through the GPIB Analyzer application.*

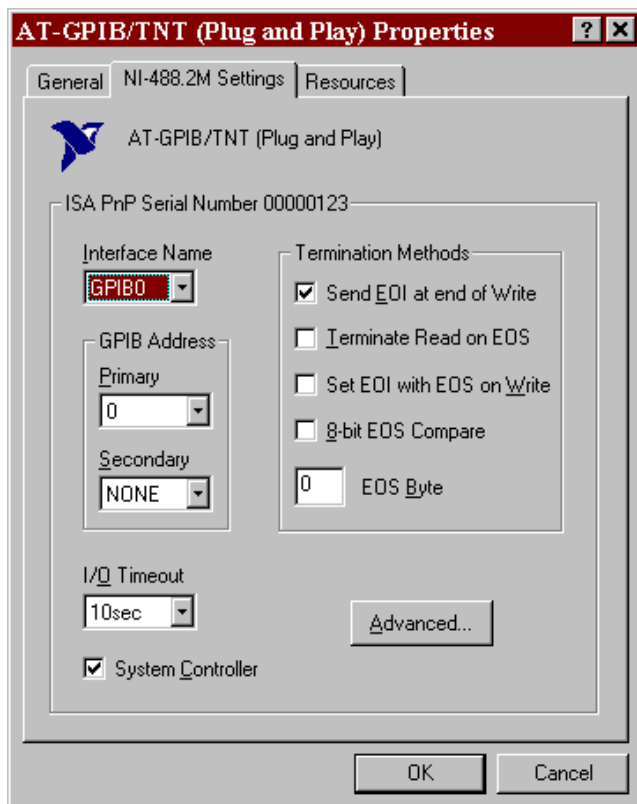


Figure 2-7. NI-488.2M Settings Tab for the AT-GPIB/TNT (PnP)

If you want to examine or modify the logical device templates for the GPIB software, select the **National Instruments GPIB Interfaces** icon from the **Device Manager** tab, and click the **Properties** button. Select the **Device Templates** tab to view the logical device templates, as shown in Figure 2-8.



Figure 2-8. Device Templates Tab for the Logical Device Templates

When you have finished configuring the NI-488.2M software, proceed to Chapter 3, *Verify the Installation*.

# Verify the Installation

This chapter describes how to verify the hardware and software installation.

You can use the Diagnostic utility, installed with your GPIB software, to test the hardware and software installation. The utility verifies that your hardware and software are functioning properly and that the configuration of your GPIB interfaces does not conflict with anything else in your system.

To run the utility, select the **Diagnostic** item under **Start>Programs>NI-488.2M Software for Windows 95**.

When you have started the Diagnostic utility, test your GPIB interfaces by clicking on the **Test All** button. If the Diagnostic is successful, it puts a checkmark next to the interface and changes its status from “untested” to “passed.” If the Diagnostic fails, it puts an X next to the interface, and changes its status from “untested” to “failed.” Figure 3-1 shows the Diagnostic utility after it has tested some GPIB interfaces.

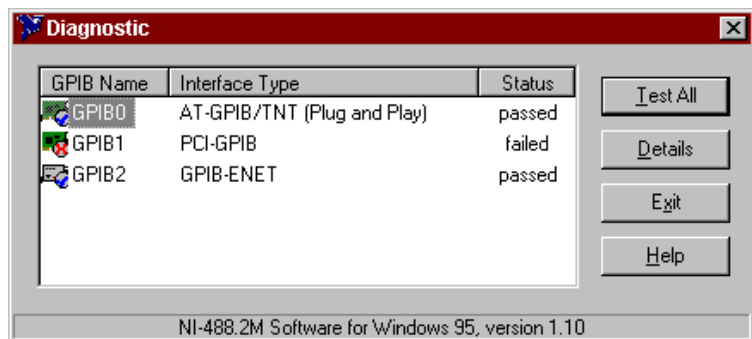
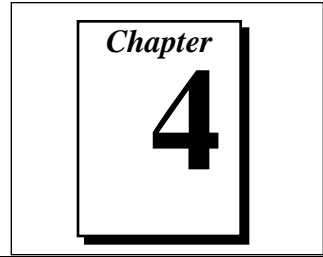


Figure 3-1. Diagnostic Utility after Testing

You can get details on any tested GPIB interface by selecting the interface and clicking the **Details** button. For each failed GPIB interface, select it and click the **Details** button to get a description of

the failure. Use that information and the information in Appendix C, *Troubleshooting and Common Questions*, to troubleshoot the problem. Troubleshooting information is also available in the online help for the Diagnostic utility, which you can access by pressing the **Help** button.

# Begin to Use the GPIB Software



This chapter helps you get started with the NI-488.2M software and the GPIB Analyzer software for Windows 95.

## Using the NI-488.2M Software

### Introduction to the Win32 Interactive Control Utility

You can use the interactive control utility to enter NI-488 functions and NI-488.2 routines interactively and see the values returned by the function calls. You can use the utility to do the following:

- Verify GPIB communication with your device quickly and easily.
- Learn the NI-488 functions and NI-488.2 routines before you write your application.
- Become familiar with the commands of your device.
- Receive data from your GPIB device.
- Troubleshoot problems with your application.

To run this utility, select the **Win32 Interactive Control** item under **Start»Programs»NI-488.2M Software for Windows 95**. This utility includes extensive online help, available only by entering `help` at the `:` prompt.

For more information about the Win32 Interactive Control utility, refer to the *NI-488.2M User Manual for Windows 95 and Windows NT*.

### Introduction to the GPIB Spy Utility

Included with the NI-488.2M software is GPIB Spy, a Win32 utility that can be used to monitor NI-488.2M calls made by Win32, Win16, and DOS GPIB applications. You can use GPIB Spy to do the following:

- Capture information about NI-488 functions and NI-488.2M routines as they are invoked by your GPIB applications.

- Display captured information, including, but not limited to, input and output parameter values, I/O buffer contents, and return values.
- Save, restore, and print captured information.

To run GPIB Spy, select the **GPIB Spy** item under **Start»Programs»NI-488.2M Software for Windows 95**. For more information about the GPIB Spy utility, refer to Chapter 5, *GPIB Spy Utility*, in the *NI-488.2M User Manual for Windows 95 and Windows NT*, or use its built-in, context-sensitive online help.

## Running Existing DOS GPIB Applications

With the NI-488.2M software properly configured, you can run your existing DOS GPIB applications along with your Win16 and Win32 applications. No DOS device driver is required. In fact, you should make sure that no older version of the GPIB DOS device driver is being loaded from your `config.sys` file, a file located on the boot drive of your computer.



**Note:** *To determine if `config.sys` is loading an older GPIB DOS driver, look for the line `device=<path>\gpib.com` in your `config.sys` file, where `<path>` refers to the drive and directory where `gpib.com` is located. If that line appears, either delete it or comment it out, and restart your computer.*

To configure the NI-488.2M software to run existing DOS GPIB applications, first make sure that you have installed the NI-488.2M software and your GPIB hardware. Then complete the following steps:

1. Double-click on the **System** icon under **Start»Settings»Control Panel**.
2. In the **System Properties** dialog box that appears, select the **Device Manager** tab.
3. Click the **View devices by type** radio button at the top of the page.
4. Click on the **National Instruments GPIB Interfaces** icon.
5. Click on the **Properties** button to display the **General** property page for the NI-488.2M software.
6. Select the check box labeled **Enable Support for DOS GPIB Applications**, and click the **OK** button.
7. Restart your computer.

After you restart your computer, you can begin to run your existing DOS GPIB applications.



For more information about the running existing DOS GPIB applications with the NI-488.2M software for Windows 95, refer to the *NI-488.2M User Manual for Windows 95 and Windows NT*.

## General Programming Considerations

As you begin developing your Win32 NI-488.2M application, remember the following points:

- For your C/C++ application, you must include the NI-488.2M header file in your source code.
- The NI-488.2M software is accessed through the 32-bit DLL, `gpiib-32.dll`, either by linking with one of the language interfaces provided with the NI-488.2M software, or by using direct DLL entry from other programming environments.
- Several sample GPIB applications are included with the NI-488.2M software. Use these as a guide for your own application development.

For information about choosing a programming method, developing your application, or compiling and linking, refer to the *NI-488.2M User Manual for Windows 95 and Windows NT*. For detailed information about each NI-488 function and NI-488.2 routine, refer to the *NI-488.2M Function Reference Manual for Win32*.

## Using the GPIB Analyzer Software

---

To start the GPIB Analyzer, select the **GPIB Analyzer** item under **Start>Programs>GPIB Analyzer for Windows 95**.

The GPIB analysis hardware of the AT-GPIB/TNT+ and PCMCIA-GPIB+ includes the ability to analyze all GPIB activity. This hardware is accessed using a Windows application called the GPIB Analyzer. Because the GPIB Analyzer monitors the actual GPIB signals, it provides the best mechanism for debugging and optimizing a GPIB system. You can use the GPIB Analyzer to do the following:

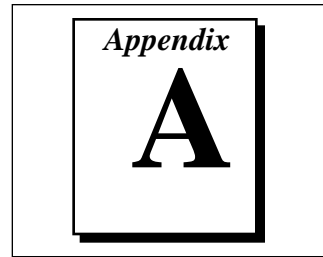
- Verify that an NI-488 or NI-488.2 application is communicating on the bus as expected.
- Determine if a GPIB device is properly conforming to the protocol and, if it is not, find possible solutions.
- Analyze performance of a GPIB system and determine how each device affects performance.
- Resolve timeout problems related to nonresponsive GPIB devices.

- Determine the cause of missing bytes in a data stream.
- Resolve problems related to standard IEEE 488 3-wire handshaking or the new high-speed HS488 handshaking protocols.
- Debug bus problems by manually controlling GPIB signal lines.

You can find information about how to use the GPIB Analyzer in the *GPIB Analyzer User Manual* and the online help. You can access the online help from the **Help** menu within the GPIB Analyzer program. The *GPIB Analyzer User Manual* provides complete information on the GPIB Analyzer.

# Uninstall the Hardware and Software

---



This appendix describes how to uninstall the Plug and Play GPIB hardware and software from Windows 95.

## Uninstalling the Plug and Play GPIB Hardware

---

Before physically removing the Plug and Play GPIB hardware from the computer, you must remove the hardware information from the Windows 95 Device Manager.

To remove the hardware information from Windows 95, double-click the **System** icon under **Start»Settings»Control Panel**. In the **System Properties** dialog box that appears, select the **Device Manager** tab, click the **View devices by type** button, and double-click on the **National Instruments GPIB Interfaces** icon.

To remove an interface, select it from the list of interfaces under **National Instruments GPIB Interfaces** as shown in Figure A-1, and click the **Remove** button. To remove a PCMCIA-GPIB+ interface, select the **NI PCMCIA-GPIB+ Multi-function Parent** item under **Multifunction**, and click the **Remove** button.

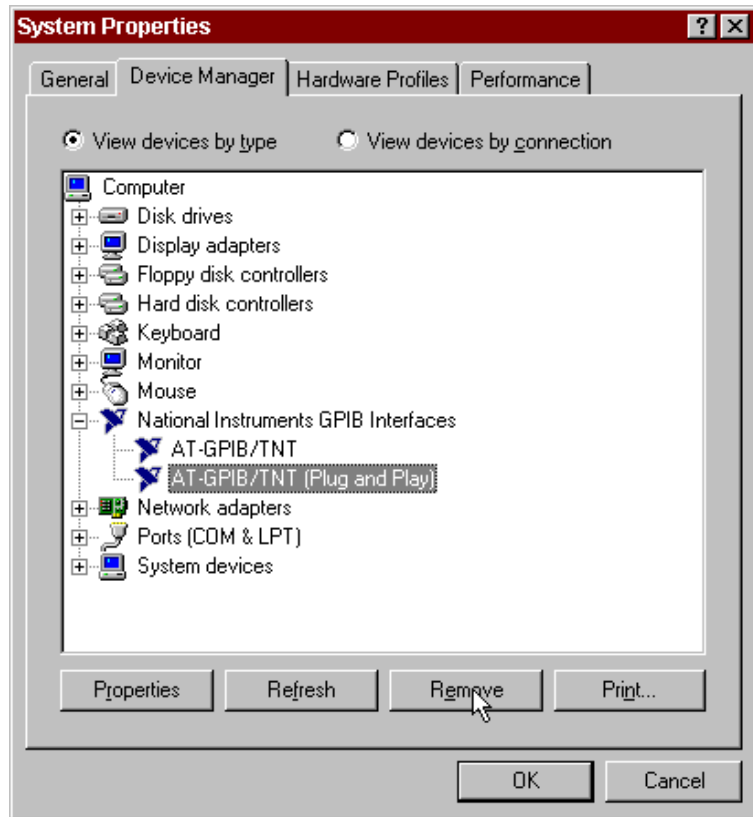


Figure A-1. Selecting an Interface to Remove

After you remove the appropriate interface information from the Device Manager, you should physically remove the interface from your computer. If your interface is a PCMCIA-GPIB+ or PCMCIA-GPIB, you may eject it after you have removed the hardware information from the Device Manager. If your interface is an AT-GPIB/TNT (PnP), AT-GPIB/TNT+, NEC-GPIB/TNT (PnP), or PCI-GPIB, you should shut down Windows 95, switch off the computer, and physically remove the interface.

## Uninstalling the Plug and Play GPIB Software

---

Before uninstalling the software, you should remove all GPIB interface information from the Windows 95 Device Manager, as described in the previous section. You do not need to shut down Windows 95 before uninstalling the software.

Complete the following steps to remove the GPIB software.

1. Select **Start»Settings»Control Panel**.
2. Double-click on the **Add/Remove Programs** icon in the Control Panel to launch the Add/Remove Programs applet. A dialog box similar to the one in Figure A-2 appears. This dialog box lists the software available for removal.

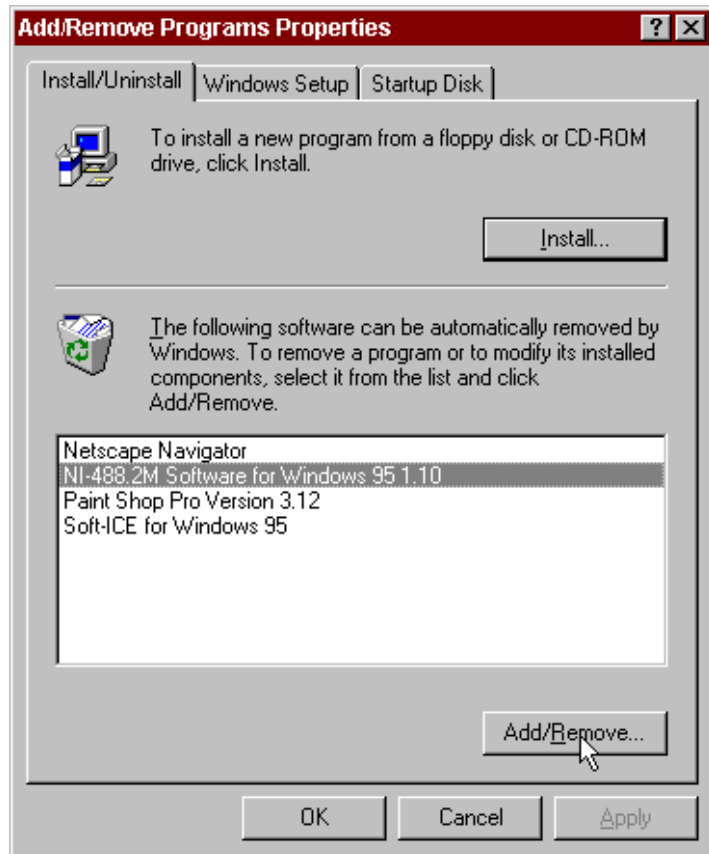


Figure A-2. Add/Remove Programs Properties Dialog Box

3. Select the GPIB software you want to remove, and click the **Add/Remove...** button. The uninstall program runs and removes all folders, programs, VxDs, DLLs, and registry entries associated with the GPIB software. Figure A-3 shows the results of a successful uninstallation.

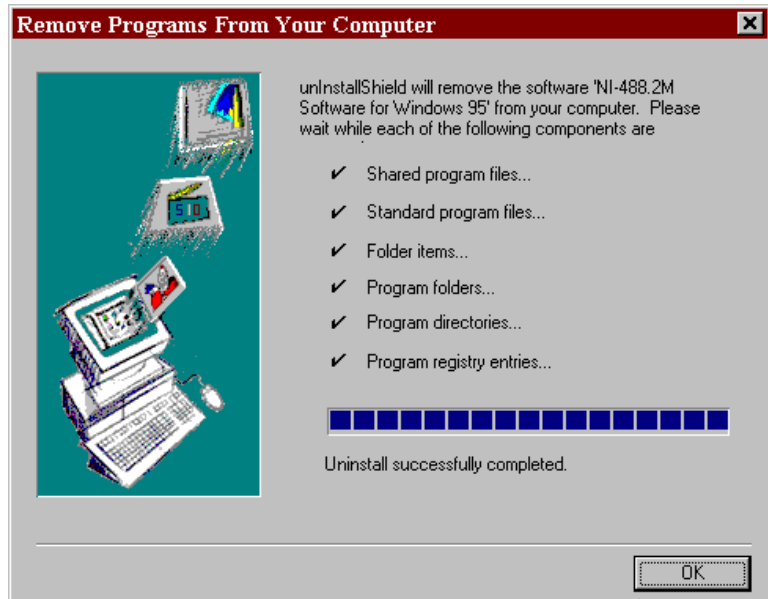
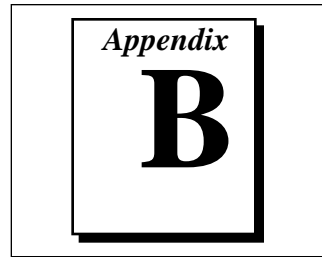


Figure A-3. Uninstallation Results

If you have interfaces other than PC Cards (PCMCIA-GPIB+ or PCMCIA-GPIB) and you have not physically removed them from your computer, shut down Windows 95, power off your computer, and remove the interfaces now.

If you want to reinstall the hardware and software, refer to Chapter 2, *Installation and Configuration*.

# Forcing Windows 95 to Detect the GPIB Hardware



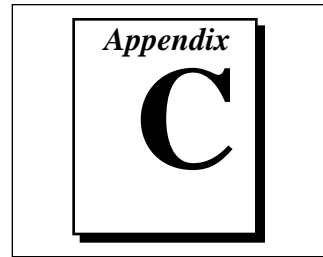
This appendix contains instructions to help you install your GPIB interface if Windows 95 has not detected it properly.

If Windows 95 does not detect your interface properly, it may not display the **New Hardware Found** dialog boxes when expected, or the driver may return an EDVR error when you try to access the GPIB interface. This problem occurs if Windows 95 has already configured the GPIB interface as an “other device.” To fix the problem, complete the following steps.

1. Select **Start»Settings»Control Panel**.
2. Double-click on the **System** icon to display the **System Properties** dialog box for the computer.
3. Click on the **Device Manager** tab at the top of the **System Properties** sheet to bring up the **Device Manager** property page. Make sure the **View devices by type** button at the top of the **Device Manager** page is selected.
4. Click on the + sign next to **Other Devices** to display a list of all the hardware devices that Windows 95 has detected and configured as **Other Devices**.
5. For each National Instruments GPIB interface listed, select the interface by clicking on it, and then click on the **Remove** button to remove the interface from the list of **Other Devices**.
6. After you have removed all of the National Instruments GPIB interfaces from the list of **Other Devices**, click on the **Refresh** button to force Windows 95 to detect each National Instruments GPIB interface and to display a **New Hardware Found** dialog box for each one.
7. Proceed with the hardware installation, as described in Chapter 2, *Installation and Configuration*.

# Troubleshooting and Common Questions

---



This appendix describes how to troubleshoot problems and answers some common questions.

## Troubleshooting EDVR Error Conditions

---

In some cases, calls to NI-488 functions or NI-488.2 routines may return with the ERR bit set in `ibsta` and the value EDVR in `iberr`. The value stored in `ibcntl` is useful in troubleshooting the error condition.

### EDVR Error Condition with `ibcntl` Set to 0xE028002C (-534249428)

If a call is made with a board number that is within the range of allowed board numbers (typically 0 to 3), but which has not been assigned to a GPIB interface, an EDVR error condition occurs with `ibcntl` set to 0xE028002C. You can assign a board number to a GPIB interface by configuring the NI-488.2M software and selecting an interface name. Refer to the *Configure the NI-488.2M Software* section of Chapter 2, *Installation and Configuration*, for information on how to configure the NI-488.2M software.

### EDVR Error Condition with `ibcntl` Set to 0xE0140025 (-535560155)

If a call is made with a board number that is not within the range of allowed board numbers (typically 0 to 3), an EDVR error condition occurs with `ibcntl` set to 0xE0140025.

### EDVR Error Condition with `ibcntl` Set to 0xE0140035 (-535560139)

If a call is made with a device name that is not listed in the logical device templates that are part of the NI-488.2M configuration utility, an EDVR error condition occurs with `ibcntl` set to 0xE0140035.



## EDVR Error Condition with `ibcntl` Set to 0xE0320029 (-533594071)

If a call is made with a board number that is assigned to a GPIB interface that is unusable because of a resource conflict, an EDVR error condition occurs with `ibcntl` set to 0xE0320029. This error condition indicates that the GPIB interface is not working properly. Refer to the *GPIB Interface Not Working Properly* section, later in this appendix. This error is also returned if you remove a PCMCIA-GPIB+ or PCMCIA-GPIB while the driver is accessing it, or if you try to access a PCMCIA-GPIB+ or PCMCIA-GPIB and 32-bit drivers are not enabled. Refer to the *Install the PCMCIA-GPIB+ or PCMCIA-GPIB* section of Chapter 2, *Installation and Configuration*, for information about enabling 32-bit PCMCIA drivers.

## EDVR Error Condition with `ibcntl` set to 0xE0140004 (-535560188)

This error may occur if the GPIB interface has not been correctly installed and detected by Windows 95. Refer to Chapter 2, *Installation and Configuration*, for details on how to install the GPIB hardware. If you have already followed those instructions and still receive this error, Windows 95 might have configured the GPIB interface as an "other device." Refer to Appendix B, *Forcing Windows 95 to Detect the GPIB Hardware*, for information on how to solve this problem.

## EDVR Error Condition with `ibcntl` set to 0xE1030043 (-519897021)

This error occurs if you have enabled DOS GPIB support and attempted to run an existing GPIB DOS application that was compiled with an older, unsupported DOS language interface.

## Troubleshooting Device Manager Problems

---

The Windows 95 Device Manager contains configuration information for all of the GPIB hardware it is aware of that is installed in your system. To start the Windows 95 Device Manager, double-click on the **System** icon under **Start»Settings»Control Panel**. In the **System Properties** box that appears, select the **Device Manager** tab and click the **View devices by type** radio button at the top of the tab.

If there is no **National Instruments GPIB Interfaces** item and you are certain you have a GPIB interface installed, refer to the *No National Instruments GPIB Interfaces Item* section of this appendix.

If the **National Instruments GPIB Interfaces** item exists, but the GPIB interface you are looking for is not listed there, refer to the *Missing GPIB Interface* section of this appendix.

If the GPIB interface you are looking for is listed, but has a circled X or exclamation mark (!) over its icon, refer to the *GPIB Interface Not Working Properly* section of this appendix.

## No National Instruments GPIB Interfaces Item

If you are certain you have a Plug and Play GPIB interface installed, but no **National Instruments GPIB Interfaces** item appears in the **Device Manager**, the interface is probably incorrectly listed under **Other Devices**. Double-click on the **Other Devices** item in the Device Manager and, one by one, remove each National Instruments GPIB interface listed there by selecting its name and then clicking the **Remove** button. After all of the National Instruments GPIB interfaces have been removed from **Other Devices**, click the **Refresh** button. At this point, the system rescans the installed hardware, and the GPIB interface should show up under **National Instruments GPIB Interfaces** without any problems. If the problem persists, contact National Instruments.

## Missing GPIB Interface

If the **National Instruments GPIB Interfaces** item exists, but the GPIB interface you are looking for is not listed there, the GPIB interface is not properly installed. For Plug and Play GPIB hardware, this means the interface is not physically present in the system.

## GPIB Interface Not Working Properly

If a GPIB interface is not working properly, its icon has a circled X or exclamation mark (!) overlaid on it, as shown in Figure C-1.



Figure C-1. GPIB Interface That Is Not Working Properly

This problem can occur for several reasons. If you encounter this problem, the Device Manager should list an error code that indicates why the problem occurred. To see the error code for a particular interface, select the name of the interface and click on the **Properties** button to go to the **General** tab for that GPIB interface. The **Device Status** section of the **General** tab shows the error code. Locate the error code in the following list to find out why your GPIB interface is not working properly.

- Code 8: The GPIB software was incompletely installed. You might encounter this problem if you have installed an AT-GPIB/TNT+ but not installed the GPIB Analyzer software. To solve this problem, reinstall the GPIB software for Windows 95.
- Code 9: Windows 95 had a problem reading information from the GPIB interface. This problem can occur if you are using an older revision of the AT-GPIB/TNT+ or AT-GPIB/TNT (PnP) interface. Contact National Instruments to upgrade your GPIB interface.
- Code 15: The GPIB interface was not assigned an Interrupt Request level. If your computer does not have any available Interrupt Request levels, Windows 95 might configure your GPIB interface without an Interrupt Request level. The GPIB software for Windows 95 cannot function without an Interrupt Request level. Another way to verify this problem is to look at the **Resource settings** list on the **Resources** tab to verify that the GPIB interface was not assigned an Interrupt Request level. To solve this problem, free up an Interrupt Request level that is being used by another device in the system.
- Code 22: The GPIB interface is disabled. To enable the GPIB interface, check the appropriate configuration checkbox in the **Device Usage** section of the **General** tab.
- Code 24: The GPIB interface is not present, or the Device Manager is unaware that the GPIB interface is present. To solve this problem, select the interface in the Device Manager, and click on the **Remove** button. Next, click the **Refresh** button. At this point, the system rescans the installed hardware, and the GPIB interface should show up without any problems. If the problem persists, contact National Instruments.
- Code 27: Windows 95 was unable to assign the GPIB interface any resources. To solve this problem, free up system resources by disabling other unnecessary hardware so that enough resources are available for the GPIB interface.

# Troubleshooting Diagnostic Utility Failures

---

The following sections explain common error messages generated by the Diagnostic utility.

## Missing Software Components

This error occurs if the software components that are necessary for the GPIB software for Windows 95 to function correctly are not present in the system. If you encounter this problem, reinstall the GPIB software for Windows 95 and run the Diagnostic utility again.

## No GPIB Interfaces Present

This error occurs if there are no GPIB interfaces physically present in the system or if you have not assigned logical board names to your GPIB interfaces using the Device Manager. If you encounter this problem, use the Device Manager to examine the installed GPIB interfaces and the logical board names assigned to each. Then, run the Diagnostic utility again.

To access this information in the Device Manager, complete the following steps:

1. Select the **System** icon under **Start»Settings»Control Panel**.
2. In the **System Properties** dialog box that appears, select the **Device Manager** tab.
3. Click the **View devices by type** radio button at the top of the **Device Manager** tab.
4. Double-click the **National Instruments GPIB Interfaces** icon. If there is no **National Instruments GPIB Interfaces** icon, either no GPIB interfaces are installed in your system or the GPIB software for Windows 95 is installed incorrectly.
5. After you have opened the **National Instruments GPIB Interfaces** icon, double-click on the GPIB interface name and select the **NI-488.2M Settings** tab to examine the logical board name associated with that interface. If it is set to **None**, change it to the appropriate name, such as **GPIB0**.

## GPIB Cables Need To Be Disconnected

This error occurs if you have any GPIB cables connected to the GPIB interface. Disconnect all GPIB cables and run the Diagnostic utility again.

## Address Resource Conflict

This error occurs if the address resources assigned to a GPIB interface conflict with the address resources being used by other devices in the system. Resource conflicts typically occur when your system contains legacy boards that use resources that have not been reserved properly with the Device Manager. If a resource conflict exists, write down the resource that caused the conflict and refer to the *Microsoft Windows 95 User's Guide* for instructions on how to use the Device Manager to reserve I/O resources for legacy boards. After the conflict has been resolved, run the Diagnostic utility again.

## Interrupt Resource Conflict

This error occurs if the interrupt resources assigned to a GPIB interface conflict with the interrupt resources being used by other devices in the system. Resource conflicts typically occur when your system contains legacy boards that use resources that have not been reserved properly with the Device Manager. If a resource conflict exists, write down the resource that caused the conflict and refer to the *Microsoft Windows 95 User's Guide* for instructions on how to use the Device Manager to reserve IRQ resources for legacy boards. After the conflict has been resolved, run the Diagnostic utility again.

## DMA Resource Conflict

This error occurs if the DMA resources assigned to a GPIB interface conflict with the DMA resources being used by other devices in the system. Resource conflicts typically occur when your system contains legacy boards that use resources that have not been reserved properly with the Device Manager. If a resource conflict exists, write down the resource that caused the conflict and refer to the *Microsoft Windows 95 User's Guide* for instructions on how to use the Device Manager to reserve DMA resources for legacy boards. After the conflict has been resolved, run the Diagnostic utility again.

## Single-Cycle DMA Required

This error occurs if the Diagnostic utility detects that it is unable to perform demand-mode DMA for the GPIB interface and that the GPIB software has not been configured to use single-cycle DMA. GPIB interfaces that use the system DMA controller, such as the AT-GPIB/TNT (PnP), normally use demand-mode DMA. If you get this error, you should use the Device Manager to configure the GPIB

software to use single-cycle DMA for all DMA transfers, and then run the Diagnostic utility again.

To configure the GPIB software to use single-cycle DMA for a particular GPIB interface, complete the following steps.

1. Select the **System** icon under **Start»Settings»Control Panel**.
2. In the **System Properties** dialog box that appears, select the **Device Manager** tab.
3. Click the **View devices by type** radio button at the top of the **Device Manager** tab.
4. Double-click the **National Instruments GPIB Interfaces** icon.
5. Double-click on the GPIB interface to be configured.
6. Select the **NI-488.2M Settings** tab.
7. Click on the **Advanced...** button and make sure that the **Demand Mode DMA** item is unchecked.

## GPIB Software Problem Encountered

This error occurs if the Diagnostic utility detects that it is unable to communicate correctly with the GPIB hardware using the installed GPIB software. If you get this error, shut down your computer, restart it, and run the Diagnostic utility again. If the problem persists, try reinstalling the GPIB software for Windows 95.

## Unknown Problem Encountered

This error occurs if an unknown problem is encountered while trying to execute the Diagnostic utility. If you encounter this problem, shut down your computer, restart it, and run the Diagnostic utility again. If the problem persists, try reinstalling the GPIB software for Windows 95.

## Common Questions

---

### GPIB Hardware and NI-488.2M Software Questions

**What do I do if my GPIB hardware is listed in the Windows 95 Device Manager with a circled X or exclamation point (!) overlaid on it?**

Refer to the *GPIB Interface Not Working Properly* section of this appendix for specific information about what might cause this problem.

If you have already completed the troubleshooting steps, fill out the forms in Appendix E, *Customer Communication*, and contact National Instruments.

### **How can I determine which type of GPIB hardware I have installed?**

Run the NI-488.2M configuration utility. To run the utility, select **Start»Settings»Control Panel»System**. Select the **Device Manager** tab in the **System Properties** dialog box. Click on the **View devices by type** radio button at the top of the sheet. If any GPIB hardware is correctly installed, a **National Instruments GPIB Interfaces** icon appears in the list of device types. Double-click this icon to see a list of installed GPIB hardware.

### **How can I determine which version of the NI-488.2M software I have installed?**

Run the Diagnostic utility. To run the utility, select the **Diagnostic** item under **Start»Programs»NI-488.2M Software for Windows 95**. The Diagnostic utility displays information about the version of the NI-488.2M software currently installed.

### **Which GPIB interfaces does version 1.1 of the NI-488.2M software for Windows 95 support?**

Version 1.1 of the NI-488.2M software for Windows 95 supports the AT-GPIB/TNT, AT-GPIB/TNT (PnP), AT-GPIB/TNT+, PCMCIA-GPIB, PCMCIA-GPIB+, PCI-GPIB, GPIB-ENET, EISA-GPIB, NEC-GPIB/TNT, and NEC-GPIB/TNT (PnP).

### **I have a GPIB interface that the NI-488.2M software for Windows 95 does not support. What should I do?**

Contact National Instruments to order the Compatibility Release for Windows 95 or to upgrade your hardware.

### **What do I do if the Diagnostic utility fails with an error?**

Refer to the *Troubleshooting Diagnostic Utility Failures* section of this appendix for specific information about what might cause the Diagnostic utility to fail. If you have already completed the troubleshooting steps, fill out the forms in Appendix E, *Customer Communication*, and contact National Instruments.

**How many GPIB interfaces can I configure for use with my GPIB software for Windows 95?**

The GPIB software for Windows 95 can be configured to communicate with up to 100 GPIB interfaces.

**How many devices can I configure for use with my GPIB software for Windows 95?**

The GPIB software for Windows 95 provides a total of 1,024 logical devices for applications to use. The default number of devices is 32. The maximum number of physical devices you should connect to a single GPIB interface is 14, or fewer, depending on your system configuration.

**Are interrupts and DMA required for the GPIB software for Windows 95?**

Interrupts are required, but DMA is not.

**When should I use the Win32 Interactive Control utility?**

You can use the Win32 Interactive Control utility to test and verify instrument communication, troubleshoot problems, and develop your application program. For more information, refer to Chapter 4, *Begin to Use the GPIB Software*.

**How do I use an NI-488.2M language interface?**

For information about using NI-488.2M language interfaces, refer to Chapter 3, *Developing Your Application*, in the *NI-488.2M User Manual for Windows 95 and Windows NT*.

**Why does the uninstall program leave some components installed?**

The uninstall program removes only items that the installation program installed. If you add anything to a directory that was created by the installation program, the uninstall program does not delete that directory, because the directory is not empty after the uninstallation. You will need to remove any remaining components yourself.



**I have already installed my NI-488.2M software, and when I try to install my AT-GPIB/TNT (PnP) or AT-GPIB/TNT+, Windows 95 does not recognize my new hardware, or it recognizes it but reports a problem. It reports an error code of 9 on the Device Manager General tab for the hardware. What should I do?**

This is a known problem with early revisions of the AT-GPIB/TNT (PnP) and AT-GPIB/TNT+ boards. If you are experiencing this problem, contact National Instruments to upgrade your board.

**Why do so many different New Hardware Found dialog boxes appear when I first insert my PCMCIA-GPIB+ card?**

Six **New Hardware Found** dialog boxes appear when a PCMCIA-GPIB+ is first inserted under Windows 95. The first dialog box contains the name **National Instruments PCMCIA-GPIB+**, which is obtained from the actual PCMCIA-GPIB+ hardware. Windows 95 then associates the hardware name with a name in the Device Manager, **NI PCMCIA-GPIB+ Multi-function Parent**. The term *Multi-function Parent* appears because although the PCMCIA-GPIB+ is physically a single PC Card device, it actually supports two functions (GPIB Analyzer and GPIB Controller). The Device Manager temporarily displays a **New Hardware Found** dialog box with the name **Unknown Device** as it begins to search for the name of the first child function. When it finds the first child function, it changes the text to **PCMCIA-GPIB+ (GPIB Analyzer)**. It repeats the process to locate the second child function name **PCMCIA-GPIB+ (GPIB Controller)**. When the **New Hardware Found** dialog boxes have all closed, you can use both functions of the PCMCIA-GPIB+ .

**I have already installed my NI-488.2M software. When I try to install my PCMCIA-GPIB+, a New Hardware Found dialog box appears prompting me for input, but the Windows default driver selection is grayed out. What should I do?**

This is a known problem with early revisions of the PCMCIA-GPIB+. Normally, when Windows 95 detects a PCMCIA-GPIB+, several **New Hardware Found** dialog boxes appear, but none of them require any user input. They appear momentarily only to inform you that the card was detected. If you are experiencing this problem, contact National Instruments to upgrade your PCMCIA-GPIB+ card.

### **How do I change the resources (Base I/O Address and Interrupt Request) assigned to the PCMCIA-GPIB+ card?**

Because the PCMCIA-GPIB+ is a single physical PC Card device that supports two separate functions (GPIB Analyzer and GPIB Controller), it is registered as a "Multi-function adapter" in the Device Manager. Windows 95 does not allow the resources of the Multi-function child devices (the GPIB Analyzer and GPIB Controller under **National Instruments GPIB Interfaces**) to be changed directly.

To change the resources of the PCMCIA-GPIB+ from within the Device Manager, you must open the **Multi-function Adapter** class and double-click on the **NI PCMCIA-GPIB+ Multi-function Parent** device. Use the **Resource** page to change the resources. Any resource changes are automatically reflected to the child devices.

### **What information should I have before I call National Instruments?**

When you call National Instruments, you should have all of the information filled out on the *Hardware and Software Configuration Form* in Appendix E, *Customer Communication*.

## **GPIB Analyzer Questions**

### **Which GPIB hardware products support the GPIB Analyzer software?**

You can use the GPIB Analyzer only if you have an AT-GPIB/TNT+ or a PCMCIA-GPIB+.

### **How do I use the GPIB Analyzer?**

You can use the GPIB Analyzer to capture, monitor, and participate in GPIB activity and to help solve problems with IEEE 488 hardware or software. For help on using the analyzer, consult the extensive online help within the analyzer itself or the *GPIB Analyzer User Manual*.

### **Should I run the GPIB Analyzer on a different computer than the one my GPIB board is installed in?**

You do not have to run the GPIB Analyzer on a separate computer. Because the AT-GPIB/TNT+ and PCMCIA-GPIB+ are NI-488.2 interfaces, you can develop your NI-488.2 application and use the GPIB Analyzer in the background on the same computer.

**Can I use the GPIB Analyzer for debugging if I am not using the AT-GPIB/TNT+ or PCMCIA-GPIB+ in my application?**

Yes. As long as you have an AT-GPIB/TNT+ or PCMCIA-GPIB+ installed, you can use the GPIB Analyzer for applications that use other IEEE 488.2 interface boards. For example, you could install the GPIB Analyzer hardware and software on the machine that uses some other GPIB interface that is supported by the NI-488.2M software for Windows 95. You could then use the GPIB Analyzer to debug applications that use the other GPIB interface.

**When I start the GPIB Analyzer, why do I get a message that says “LabWindows/CVI requires a math coprocessor”?**

In order for the GPIB Analyzer to function properly under Windows 95, your personal computer must have a math coprocessor. For more information, refer to the *What You Need to Get Started* section of Chapter 1, *Introduction*.

**Is it possible to disable the GPIB Analyzer or GPIB Controller function of my PCMCIA-GPIB+ or AT-GPIB/TNT+ (GPIB+) if I am not using it?**

Yes. For example, if you have two GPIB+ interfaces in your system, only one can be used as a GPIB Analyzer, so you should disable the GPIB Analyzer on the other interface. To do this, open the Device Manager, look under **National Instruments GPIB Interfaces**, and open the GPIB Analyzer (or GPIB Controller) you want to disable. In the **Device usage** field on the **General** page, check marks appear to the left of the current configuration (usually **Original Configuration (Current)**). Click on the checkbox to remove the check mark, then click **OK**.

**Why does the uninstall program leave some components installed?**

The uninstall program removes only items that the installation program installed. If you add anything to a directory that was created by the installation program, the uninstall program does not delete that directory, because the directory is not empty after the uninstallation. You will need to remove any remaining components yourself.

**What information should I have before I call National Instruments?**

When you call National Instruments, you should have all of the information filled out on the *Hardware and Software Configuration Form* in Appendix E, *Customer Communication*.

# Specifications

This appendix describes the physical characteristics of the GPIB hardware and the transfer rates of the NI-488.2M software, along with the recommended operating conditions.

## Hardware Characteristics

Table D-1. AT-GPIB/TNT (PnP) Hardware Characteristics

Characteristic	Specification
Dimensions	10.67 by 16.51 cm (4.2 by 6.5 in.)
Power Requirement (from PC AT I/O channel)	+5 VDC 120 mA typical 200 mA maximum
I/O Connector	IEEE 488 Standard 24-pin
Operating Environment Component Temperature Relative Humidity	0° to 55° C 10% to 90%, noncondensing
Storage Environment Temperature Relative Humidity	-20° to 70° C 5% to 90%, noncondensing
EMI	FCC Class B Certified

Table D-2. AT-GPIB/TNT+ Hardware Characteristics

Characteristic	Specification
Dimensions	10.67 by 16.51 cm (4.2 by 6.5 in.)
Power Requirement (from PC AT I/O channel)	+5 VDC 460 mA typical 850 mA maximum
I/O Connector	IEEE 488 Standard 24-pin
Operating Environment Component Temperature Relative Humidity	0° to 55° C 10% to 90%, noncondensing
Storage Environment Temperature Relative Humidity	-20° to 70° C 5% to 90%, noncondensing
EMI	FCC Class B Certified

Table D-3. NEC-GPIB/TNT (PnP) Hardware Characteristics

Characteristic	Specification
Dimensions	14.87 by 16.92 cm (5.85 by 6.66 in.)
Power Requirement (from PC-98 Bus)	+5 VDC 260 mA typical 750 mA maximum
I/O Connector	IEEE 488 Standard 24-pin
Operating Environment Component Temperature Relative Humidity	0° to 55° C 10% to 90%, noncondensing
Storage Environment Temperature Relative Humidity	-20° to 70° C 5% to 90%, noncondensing
EMI	VCCI Certified

Table D-4. PCI-GPIB Hardware Characteristics

<b>Characteristic</b>	<b>Specification</b>
Dimensions	13.34 by 10.67 cm (5.25 by 4.2 in.)
Power Requirement (from PCI bus)	+5 VDC 600 mA typical
I/O Connector	IEEE 488 Standard 24-pin
Operating Environment Ambient Temperature Relative Humidity	0° to 55° C 10% to 90%, noncondensing
Storage Environment Temperature Relative Humidity	-20° to 70° C 5% to 90%, noncondensing
EMI	FCC Class B Certified

Table D-5. PCMCIA-GPIB+ Hardware Characteristics

<b>Characteristic</b>	<b>Specification</b>
Dimensions	85.6 by 54.0 by 5.0 mm (3.370 by 2.126 by 0.197 in.)
Power Requirement (from PCMCIA expansion slot)	+5 VDC 150 mA typical
I/O Interface	Special IEEE 488 cable with 24-pin converter for PC Card
Operating Environment Component Temperature Relative Humidity	0° to 55° C 10% to 90%, noncondensing
Storage Environment Temperature Relative Humidity	-20° to 70° C 5% to 90%, noncondensing
EMI	FCC Class A Verified

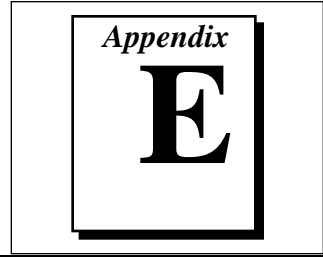
Table D-6. PCMCIA-GPIB Hardware Characteristics

Characteristic	Specification
Dimensions	85.6 by 54.0 by 5.0 mm (3.370 by 2.126 by 0.197 in.)
Power Requirement (from PCMCIA expansion slot)	+5 VDC 65 mA typical 85 mA maximum
I/O Interface	Special IEEE 488 cable with 24-pin converter for PC Card
Operating Environment Component Temperature Relative Humidity	0° to 55° C 10% to 90%, noncondensing
Storage Environment Temperature Relative Humidity	-20° to 70° C 5% to 90%, noncondensing
EMI	FCC Class A Verified

## Software Transfer Rates

Table D-7. NI-488.2M Software Transfer Rates for the Plug and Play GPIB Hardware

GPIB Hardware	Transfer Method	Maximum GPIB Transfer Rate
AT-GPIB/TNT (PnP), AT-GPIB/TNT+	3-wire (IEEE 488)	
	In ISA computer	1.5 Mbytes/s*
	In EISA computer	1.5 Mbytes/s*
	High Speed (HS488)	
NEC-GPIB/TNT (PnP)	In ISA computer	1.8 Mbytes/s*
	In EISA computer	2.8 Mbytes/s*
PCI-GPIB	3-wire (IEEE 488)	1.0 Mbyte/s*
	High Speed (HS488)	1.0 Mbyte/s*
PCMCIA-GPIB+, PCMCIA-GPIB	3-wire (IEEE 488)	1.5 Mbytes/s*
	High Speed (HS488)	7.8 Mbytes/s*
* Actual speed may vary considerably from speed shown because of system and instrumentation capabilities.		



# Customer Communication

---

For your convenience, this appendix contains forms to help you gather the information necessary to help us solve technical problems you might have as well as a form you can use to comment on the product documentation. Filling out a copy of the *Technical Support Form* before contacting National Instruments helps us help you better and faster.

National Instruments provides comprehensive technical assistance around the world. In the U.S. and Canada, applications engineers are available Monday through Friday from 8:00 a.m. to 6:00 p.m. (central time). In other countries, contact the nearest branch office. You may fax questions to us at any time.

## Electronic Services



### Bulletin Board Support

National Instruments has BBS and FTP sites dedicated for 24-hour support with a collection of files and documents to answer most common customer questions. From these sites, you can also download the latest instrument drivers, updates, and example programs. For recorded instructions on how to use the bulletin board and FTP services and for BBS automated information, call (512) 795-6990. You can access these services at:

United States: (512) 794-5422 or (800) 327-3077  
Up to 14,400 baud, 8 data bits, 1 stop bit, no parity

United Kingdom: 01635 551422  
Up to 9,600 baud, 8 data bits, 1 stop bit, no parity

France: 1 48 65 15 59  
Up to 9,600 baud, 8 data bits, 1 stop bit, no parity



### FTP Support

To access our FTP site, log on to our Internet host, `ftp.natinst.com`, as anonymous and use your Internet address, such as `joesmith@anywhere.com`, as your password. The support files and documents are located in the `/support` directories.





## FaxBack Support

FaxBack is a 24-hour information retrieval system containing a library of documents on a wide range of technical information. You can access FaxBack from a touch-tone telephone at (512) 418-1111.



## E-Mail Support (currently U.S. only)

You can submit technical support questions to the appropriate applications engineering team through e-mail at the Internet addresses listed below. Remember to include your name, address, and phone number so we can contact you with solutions and suggestions.

GPIB: [gpib.support@natinst.com](mailto:gpib.support@natinst.com)

LabVIEW: [lv.support@natinst.com](mailto:lv.support@natinst.com)

DAQ: [daq.support@natinst.com](mailto:daq.support@natinst.com)

HiQ: [hiq.support@natinst.com](mailto:hiq.support@natinst.com)

VXI: [vxi.support@natinst.com](mailto:vxi.support@natinst.com)

VISA: [visa.support@natinst.com](mailto:visa.support@natinst.com)

LabWindows: [lw.support@natinst.com](mailto:lw.support@natinst.com)

Lookout: [lookout.support@natinst.com](mailto:lookout.support@natinst.com)

## Telephone and Fax Support

National Instruments has branch offices all over the world. Use the list below to find the technical support number for your country. If there is no National Instruments office in your country, contact the source from which you purchased your software to obtain support.



### Telephone

Australia	03 9 879 9422
Austria	0662 45 79 90 0
Belgium	02 757 00 20
Canada (Ontario)	519 622 9310
Canada (Quebec)	514 694 8521
Denmark	45 76 26 00
Finland	90 527 2321
France	1 48 14 24 24
Germany	089 741 31 30
Hong Kong	2645 3186
Italy	02 413091
Japan	03 5472 2970
Korea	02 596 7456
Mexico	95 800 010 0793
Netherlands	0348 433466
Norway	32 84 84 00
Singapore	2265886
Spain	91 640 0085
Sweden	08 730 49 70
Switzerland	056 200 51 51
Taiwan	02 377 1200
U.K.	01635 523545



### Fax

03 9 879 9179
0662 45 79 90 19
02 757 03 11
514 694 4399
45 76 26 02
90 502 2930
1 48 14 24 14
089 714 60 35
2686 8505
02 41309215
03 5472 2977
02 596 7455
5 520 3282
0348 430673
32 84 86 00
2265887
91 640 0533
08 730 43 70
056 200 51 55
02 737 4644
01635 523154

# Technical Support Form

Photocopy this form and update it each time you make changes to your software or hardware, and use the completed copy of this form as a reference for your current configuration. Completing this form accurately before contacting National Instruments for technical support helps our applications engineers answer your questions more efficiently.

If you are using any National Instruments hardware or software products related to this problem, include the configuration forms from their user manuals. Include additional pages if necessary.

Name \_\_\_\_\_

Company \_\_\_\_\_

Address \_\_\_\_\_

\_\_\_\_\_

Fax ( \_\_\_\_ ) \_\_\_\_\_ Phone ( \_\_\_\_ ) \_\_\_\_\_

Computer brand \_\_\_\_\_ Model \_\_\_\_\_ Processor \_\_\_\_\_

Operating system (include version number \_\_\_\_\_)

Clock Speed \_\_\_\_\_MHz RAM \_\_\_\_\_MB Display adapter \_\_\_\_\_

Mouse \_\_\_\_\_yes \_\_\_\_\_no Other adapters installed \_\_\_\_\_

Hard disk capacity \_\_\_\_\_MB Brand \_\_\_\_\_

Instruments used \_\_\_\_\_

National Instruments hardware product model \_\_\_\_\_ Revision \_\_\_\_\_

Configuration \_\_\_\_\_

National Instruments software product \_\_\_\_\_ Version \_\_\_\_\_

Configuration \_\_\_\_\_

The problem is \_\_\_\_\_

\_\_\_\_\_

\_\_\_\_\_

\_\_\_\_\_

List any error messages \_\_\_\_\_

\_\_\_\_\_

\_\_\_\_\_

\_\_\_\_\_

The following steps will reproduce the problem \_\_\_\_\_

\_\_\_\_\_

\_\_\_\_\_

# Hardware and Software Configuration Form

Record the settings and revisions of your hardware and software on the line to the right of each item. Complete a new copy of this form each time you revise your software or hardware configuration, and use this form as a reference for your current configuration. Completing this form accurately before contacting National Instruments for technical support helps our applications engineers answer your questions more efficiently.

## National Instruments Products

GPIB Interface Type and Revision \_\_\_\_\_

GPIB Software for Windows 95 Version Number on Disk \_\_\_\_\_

Programming Language Interface Version \_\_\_\_\_

Diagnostic Utility Results \_\_\_\_\_

## Other Products

### Resource Summary Report from the Device Manager

To create this report, first display the **System Properties** dialog box for the computer by double-clicking on the **System** icon under **Start»Settings»Control Panel**. Then click on the **Device Manager** tab and highlight the **Computer** icon. Click on the **Print** button, and check the **Print to file** checkbox in the **Print** dialog box before clicking on **OK**.

---

---

### Programming Environment Information

Programming Language \_\_\_\_\_

Compiler Vendor \_\_\_\_\_ Compiler Version \_\_\_\_\_

### Application Information

DOS Application \_\_\_\_\_ Win16 Application \_\_\_\_\_ Win32 Application \_\_\_\_\_

If Win16 or Win32, method of accessing DLL (link with language interface or direct entry?)

---

# Documentation Comment Form

National Instruments encourages you to comment on the documentation supplied with our products. This information helps us provide quality products to meet your needs.

**Title:** Getting Started with Your Plug and Play GPIB Hardware and Software for Windows 95

**Edition Date:** June 1996

**Part Number:** 321035B-01

Please comment on the completeness, clarity, and organization of the manual.

---

---

---

---

---

---

---

---

If you find errors in the manual, please record the page numbers and describe the errors.

---

---

---

---

---

---

---

---

Thank you for your help.

Name \_\_\_\_\_

Title \_\_\_\_\_

Company \_\_\_\_\_

Address \_\_\_\_\_

---

Phone ( \_\_\_\_\_ ) \_\_\_\_\_

**Mail to:** Technical Publications  
National Instruments Corporation  
6504 Bridge Point Parkway  
Austin, TX 78730-5039

**Fax to:** Technical Publications  
National Instruments Corporation  
(512) 794-5678

## Glossary

Prefix	Meaning	Value
m-	milli-	$10^{-3}$
c-	centi-	$10^{-2}$
k-	kilo-	$10^3$
M-	mega-	$10^6$

°	degrees
%	percent
A	amperes
AC	alternating current
ANSI	American National Standards Institute
ASIC	application-specific integrated circuit
base I/O address	lowest I/O address used by the GPIB hardware
C	Celsius
DLL	dynamic link library
DMA	direct memory access
EISA	Extended Industry Standard Architecture
EMI	electromagnetic interference
FCC	Federal Communications Commission
GPIB	General Purpose Interface Bus
Hz	hertz
IEEE	Institute of Electrical and Electronic Engineers
in.	inches
I/O	input/output
IRQ	interrupt request
ISA	Industry Standard Architecture
KB	kilobytes of memory

*Glossary*

legacy board	ISA board whose system resources are chosen by changing physical switches or jumpers on the board
m	meters
MB	megabytes of memory
PC	personal computer
PnP	Plug and Play
RAM	random-access memory
resource	hardware settings used by devices in a computer system, including ISA interrupt level, DMA channel, and base I/O address
s	seconds
VDC	volts direct current